

# D Series Touch Panel



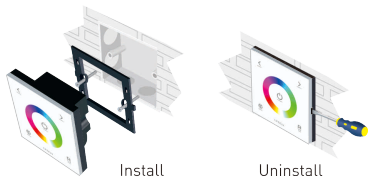
## D3



### 1. Technical Specs:

- Input Voltage: 12-24Vdc
- Load Current: 4A×3CH Max 12A
- Max Output Power: 144W/288W(12V/24V)
- Working Temp.: -30°C~55°C
- Dimensions: L86×W86×H36(mm)
- Package Size: L113×W112×H50(mm)
- Weight(G.W.): 208g

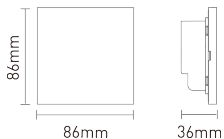
### 2. Installation Instruction:



Install

Uninstall

### 3. Product Size:



### 4. Key Functions:



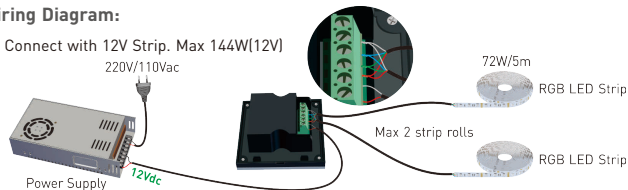
\* Long press to turn on/off the tone.

### The Changing Mode (Press to Switch):

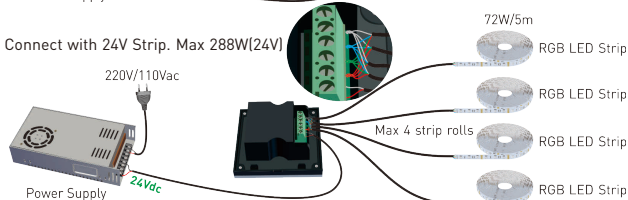
- A. Static Red B. Static Green C. Static Blue D. Static Yellow E. Static Purple F. Static Cyan  
G. Static White H. RGB Jumping I. 7 Colors Jumping J. RGB Smooth K. 7 Colors Smooth

### 6. Wiring Diagram:

E.g 1: Connect with 12V Strip. Max 144W(12V)



E.g 2: Connect with 24V Strip. Max 288W(24V)



### 5. Green Block:

