

D Series Touch Panel



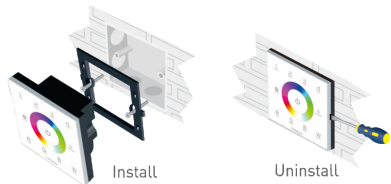
D8



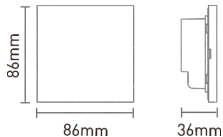
1. Technical Specs:

- Input Voltage: 12-24Vdc
- Output Signal: DMX512
- Control Mode: 4 Zones Control
- Working Temperature: -30°C~55°C
- Dimensions: L86×W86×H36(mm)
- Package Size: L113×W112×H50(mm)
- Weight(G.W.): 208g

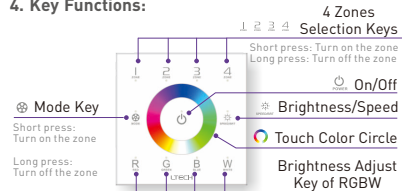
2. Installation Instruction:



3. Product Size:



4. Key Functions:

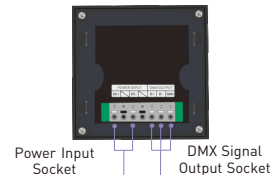


* Long press to turn on/off the tone.

The Changing Mode (Press to Switch):

1. Static Red
2. Static Green
3. Static Blue
4. Static Yellow
5. Static Purple
6. Static Cyan
7. Static White
8. RGB Skipping
9. 7 Colors Skipping
10. RGB Smooth
11. 7 Colors Smooth

5. Terminals:



6. Wiring Diagram:

